

# ERGONOMIC ACCESSORIES

---

Monitor Arms

Desk Frame



# CONTENTS

04

**HAT**  
COLLECTION

12

**MONITOR  
ARMS**



## ERGONOMIC ACCESSORIES

Ergonomics is about designing for people. Defined as the science of fitting a workplace to the user's needs, ergonomics aims to help increase efficiency and productivity and reduce to discomfort.



14

**VAULT**  
COLLECTION

16

**CK**  
COLLECTION



Ergonomics also takes into account the need for movement throughout the day. Office furniture has traditionally encouraged stiff, fixed postures and little movement. However, a balance between sitting and standing, can be aided with a Height-Adjustable desk, a proven way to combat the effects of sedentary workplace behavior.

# Our Advantages

Our outstanding quality products, competitive prices and reliable services guarantee that our clients to gain strong advantages over competitors. We provide not only large scale but also specially customized productions based on our extensive connections and close cooperation with many large suppliers in this industry.



**HIGHLY CUSTOMIZED PRODUCTS**



**INNOVATION RESEARCH CENTRE**



**HIGH SAFETY STANDARDS**



**GLOBAL AFTER-SALES SERVICE SYSTEM**



**INDUSTRY LEADING POSITION**



**MEET ENVIRONMENTAL REQUIREMENTS**



**PROFESSIONAL & EFFICIENT PRODUCTION**



**DIVERSIFIED CONFIGURATION**

# Lifting Desk Frame

## STANDING OFFICE IS A NEW TYPE OF OFFICE WORK

Employees can choose to stand instead of sitting work in order to relax the body and the spirit.

## INTELLIGENT LIFTING CAN MAINTAIN A HEALTHY AND EFFICIENT OFFICE STATE

People's health and work efficiency will be seriously affected if they keep the head down and body forward. These postures will cause cervical, lumbar disease, weight gaining and many chronic diseases. Standing work doesn't have any negative effects of information processing and reading but can improve the concentration and memory. The penetration rate of intelligent office table has reached 50% in European and American countries.

## Assembly Frame

Provide various forms of easy assembly frame to flexibly meet customer requirements of lifting tables.

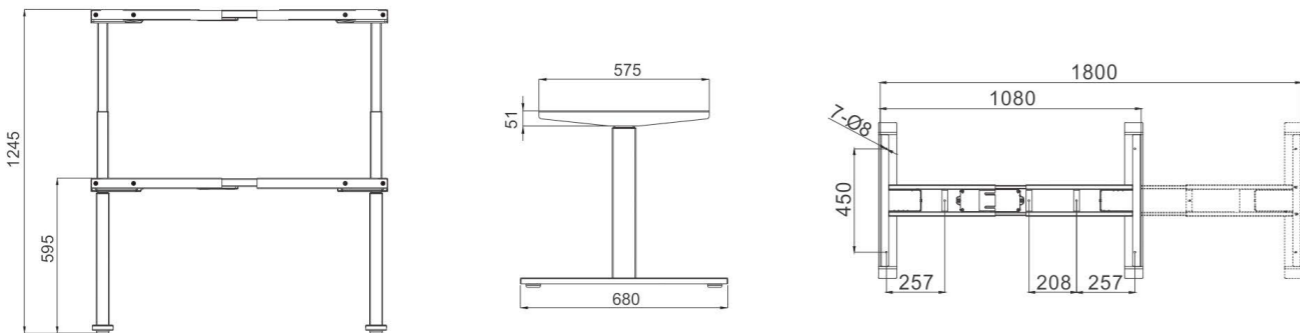
## Stable Structure

The stable frame structure has big load capacity and meets the requirements of safe office work.

## Light Lifting

It is designed for quiet office environment with low noise.



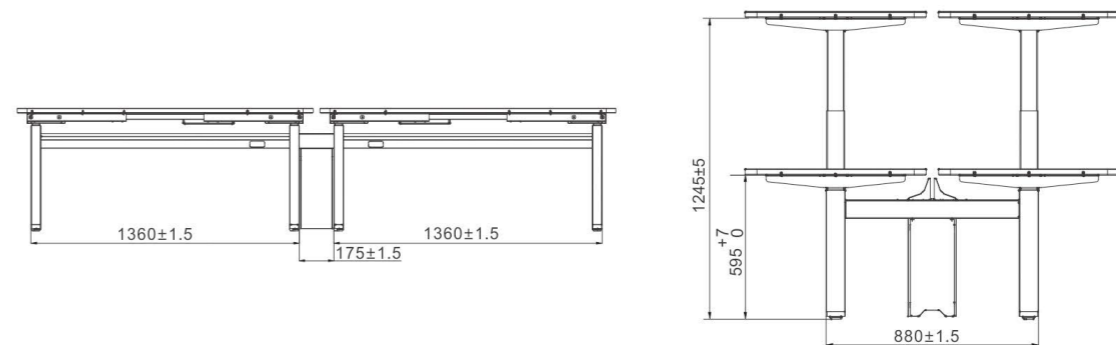
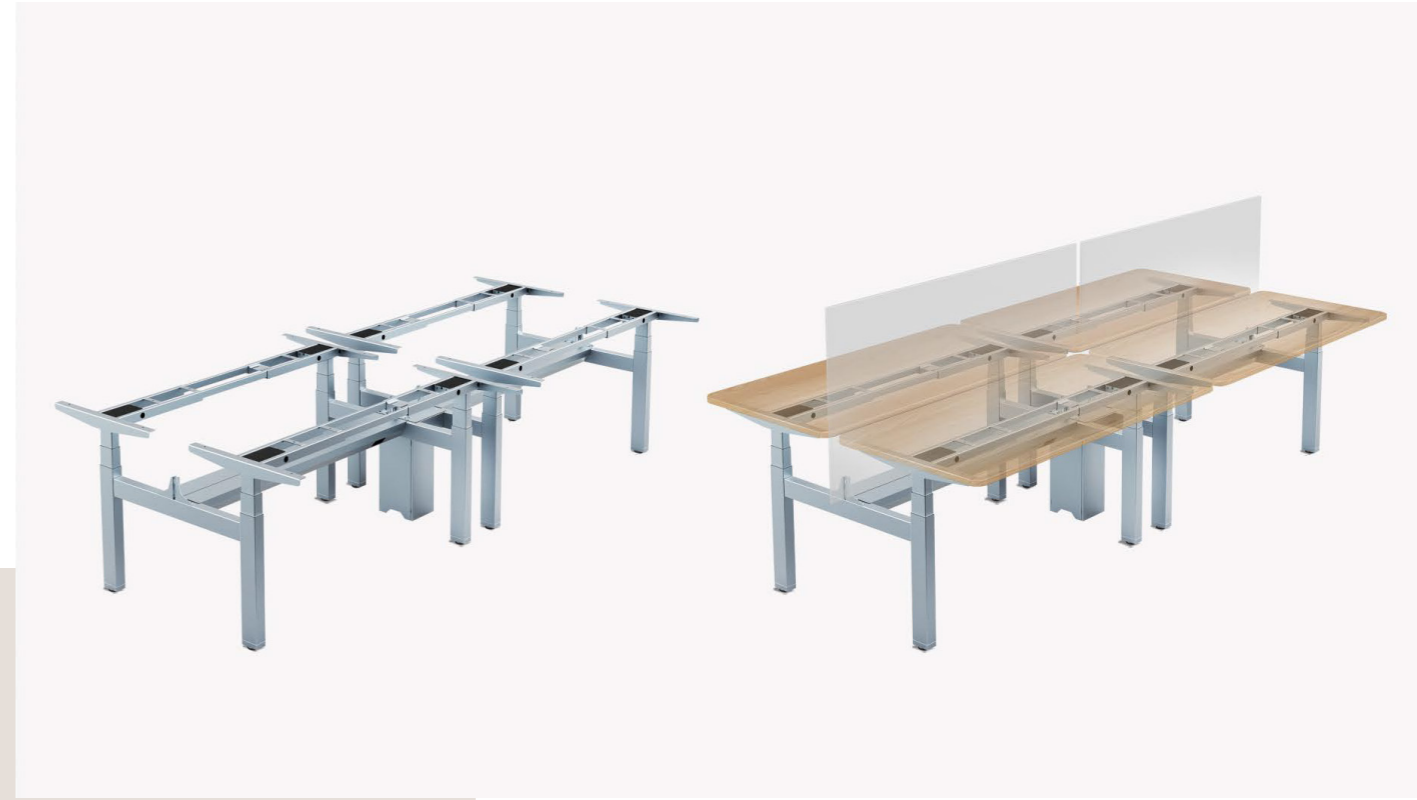


**TECHNICAL PARAMETER**

HEIGHT(mm)	min. 595 / max. 1245
STROKE (mm)	650
SPEED (mm/s)	40
WIDTH (mm)	1080 ~ 1800
LOAD CAPACITY (N)	1250
NOISE (dB)	<50

**JC35TS - R13S**

**Surface Colours**



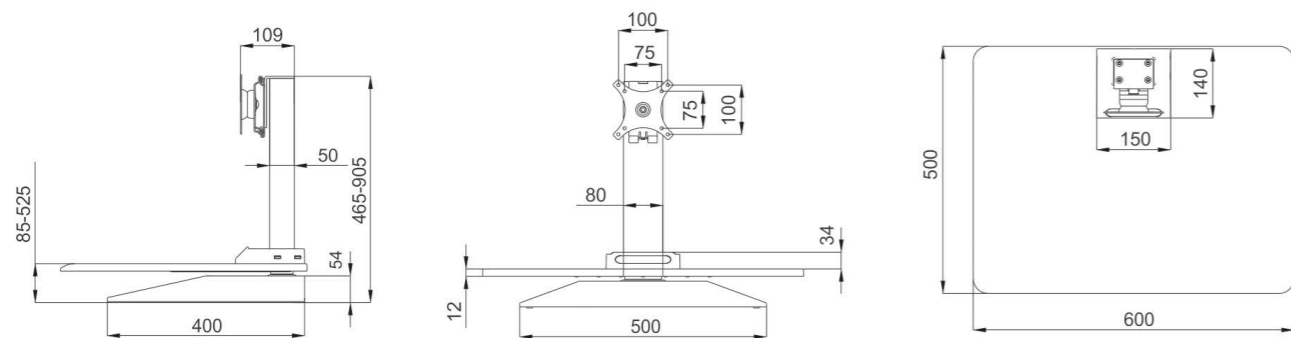
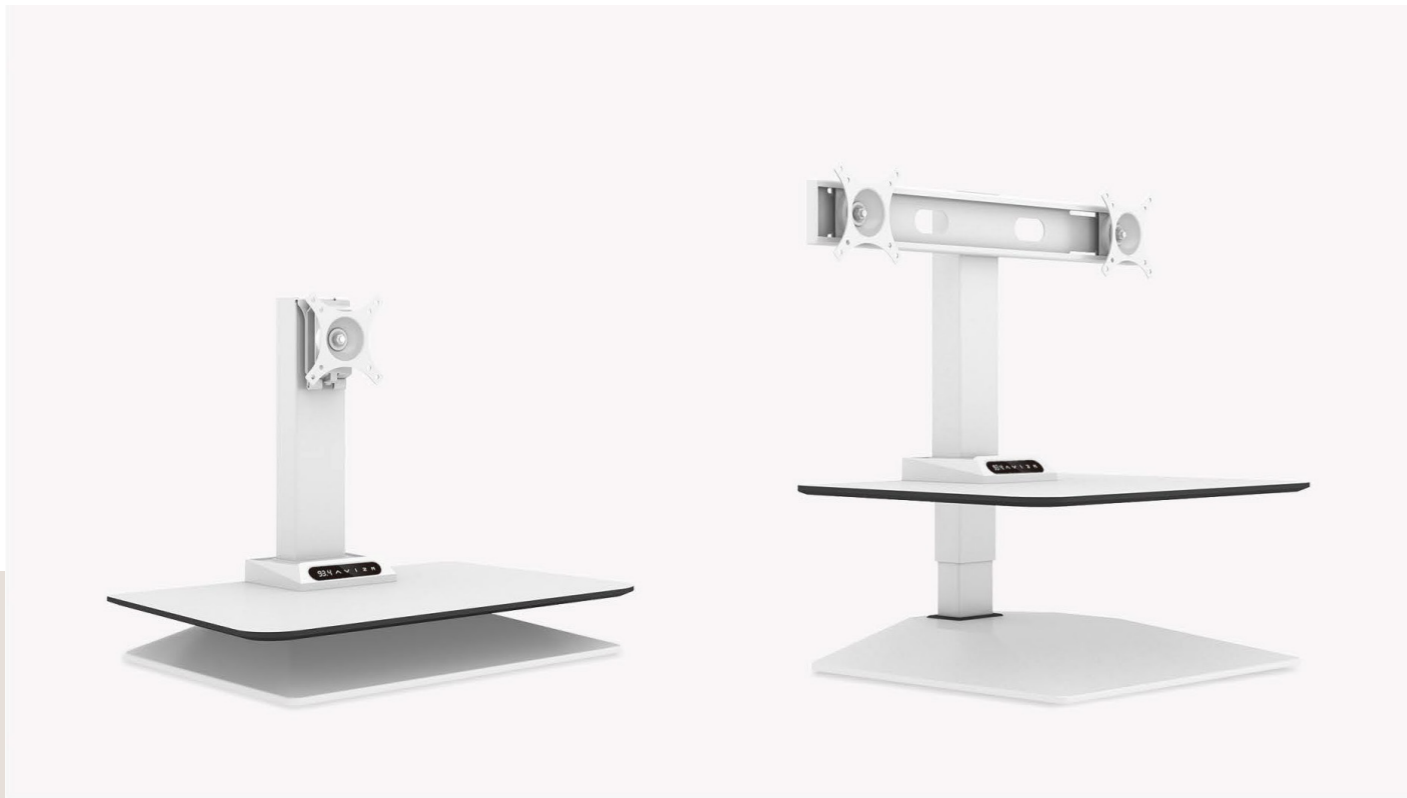
**TECHNICAL PARAMETER**

HEIGHT(mm)	min. 595 / max. 1245
STROKE (mm)	650
SPEED (mm/s)	40
WIDTH (mm)	Accept Customized Length
LOAD CAPACITY (N)	1250
NOISE (dB)	<50

**JC35TF - R13S - 4**

**Surface Colours**



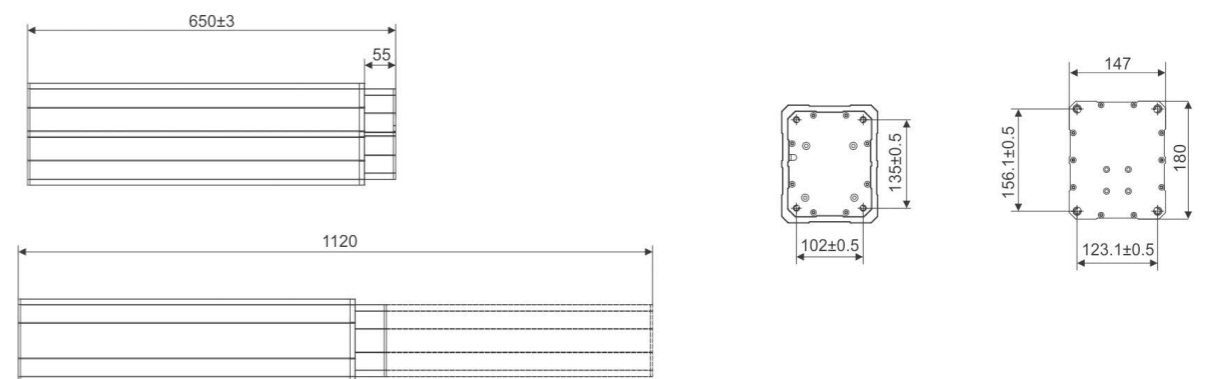


**TECHNICAL PARAMETER**

HEIGHT(mm)	525
STROKE (mm)	440
SPEED (mm/s)	40
WIDTH (mm)	85 ~ 525
LOAD CAPACITY (N)	50

**JC35SD01**

**Surface Colours**



**TECHNICAL PARAMETER**

HEIGHT(mm)	min 650 / max 1120
STROKE (mm)	470
SPEED (mm/s)	20
WIDTH (mm)	-
LOAD CAPACITY (N)	1000
NOISE (dB)	<50

**JC35EM2**

**Surface Colours**





MONITOR ARMS

# MONITOR ARMS



## Single Monitor Arm

**Colour:** Black

**Type of mounting:** Grommet or Clamp

**Arm type:** Single

**Features:**

- 360° Monitor Rotation
- 90° Monitor Tilting Angle

Available with both 75mm or 100mm VESA Brackets

**Max Loading Weight:** 9kg

**Material:** Die Cast



## Double Monitor Arm

**Colour:** Black

**Type of mounting:** Grommet or Clamp

**Arm type:** Double

**Features:**

- 360° Monitor Rotation
- 90° Monitor Tilting Angle

Available with both 75mm or 100mm VESA Brackets

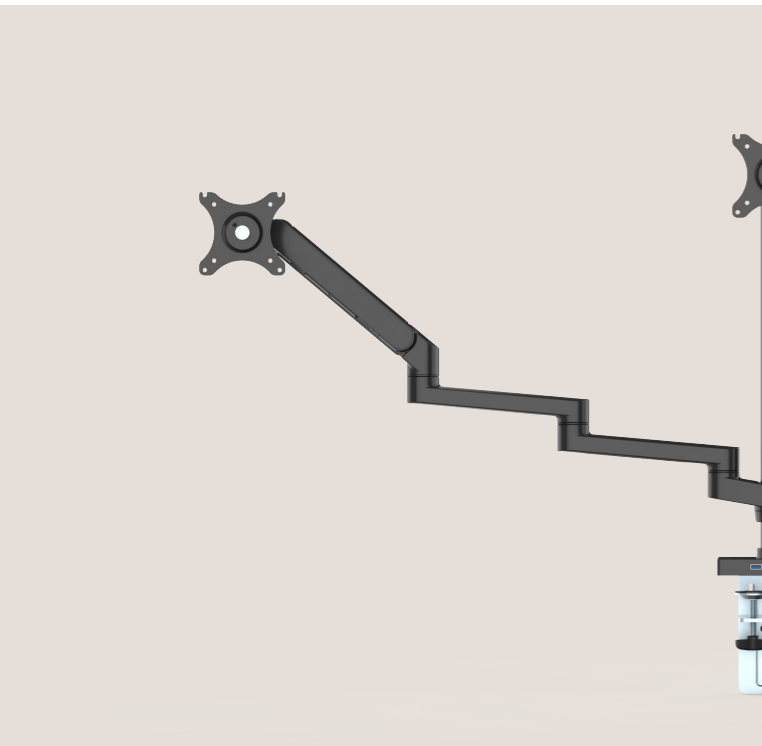
**Max Loading Weight:** 9kg

**Material:** Die Cast





# Office Examples



## Triple Monitor Arm

- Colour:** Black
- Type of mounting:** Grommet or Clamp
- Arm type:** Triple
- Features:**
  - 360° Monitor Rotation
  - 90° Monitor Tilting Angle
- Available with both 75mm or 100mm VESA Brackets
- Max Loading Weight:** 9kg
- Material:** Die Cast



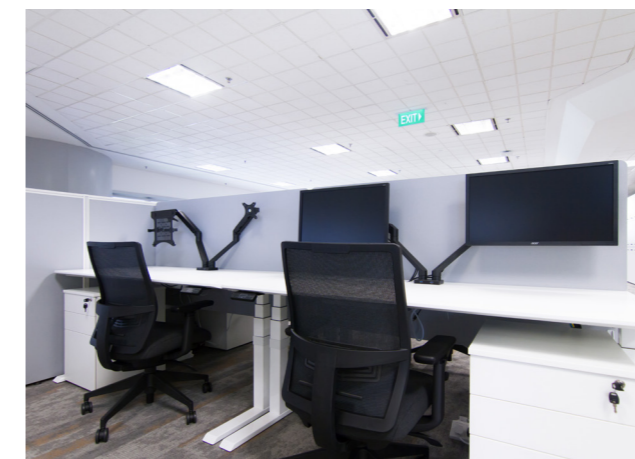
Single Monitor Arm @ Schneider Electric



Double Monitor Arm @ Schneider Electric



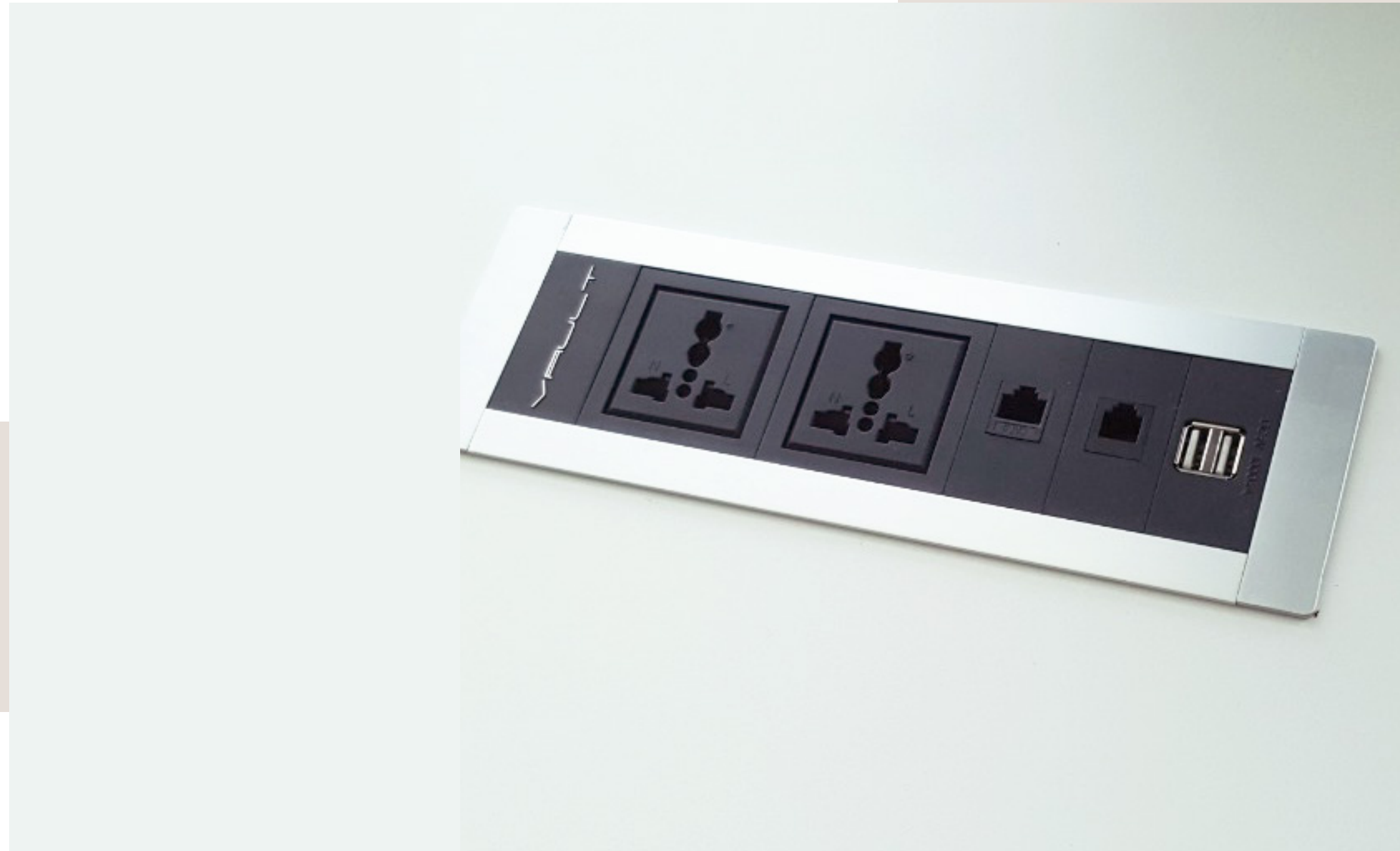
Close up of Double Moinitor Arm @ Schneider Electric



Double Monitor Arm @ Expeditor



Double Monitor Arm @ Expeditor



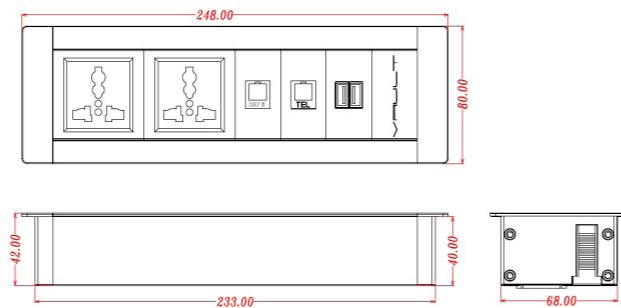
VAULT

**VAULT**  
COLLECTION



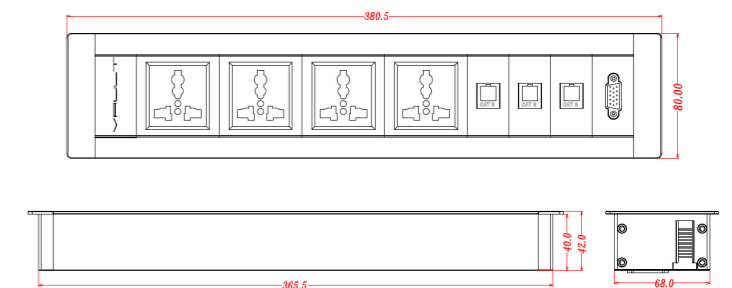
## CK-01

CK-01 is a newly developed built-in type power netbox which can be installed at meeting tables, workdesk surfaces or on the sofa. Different installation methods can be applied to suit different situations. The installation methods are simple and easy.



## CK-11

The power connection of the power netbox can be connected in series to each other by using an interconnecting cables can come out either from the side or the back of the power netbox. Vault has already been approved with UL, 3C, CE & RoHS certification.





CKQ is designed to be mounted at the rear of the work surface or on function wall. They are available with desk clamp brackets and also a standoff bracket for when retrofitting against a screen or without mounting brackets to facilitate in a basket or tray.

**CKQ**  
COLLECTION



Available in Black

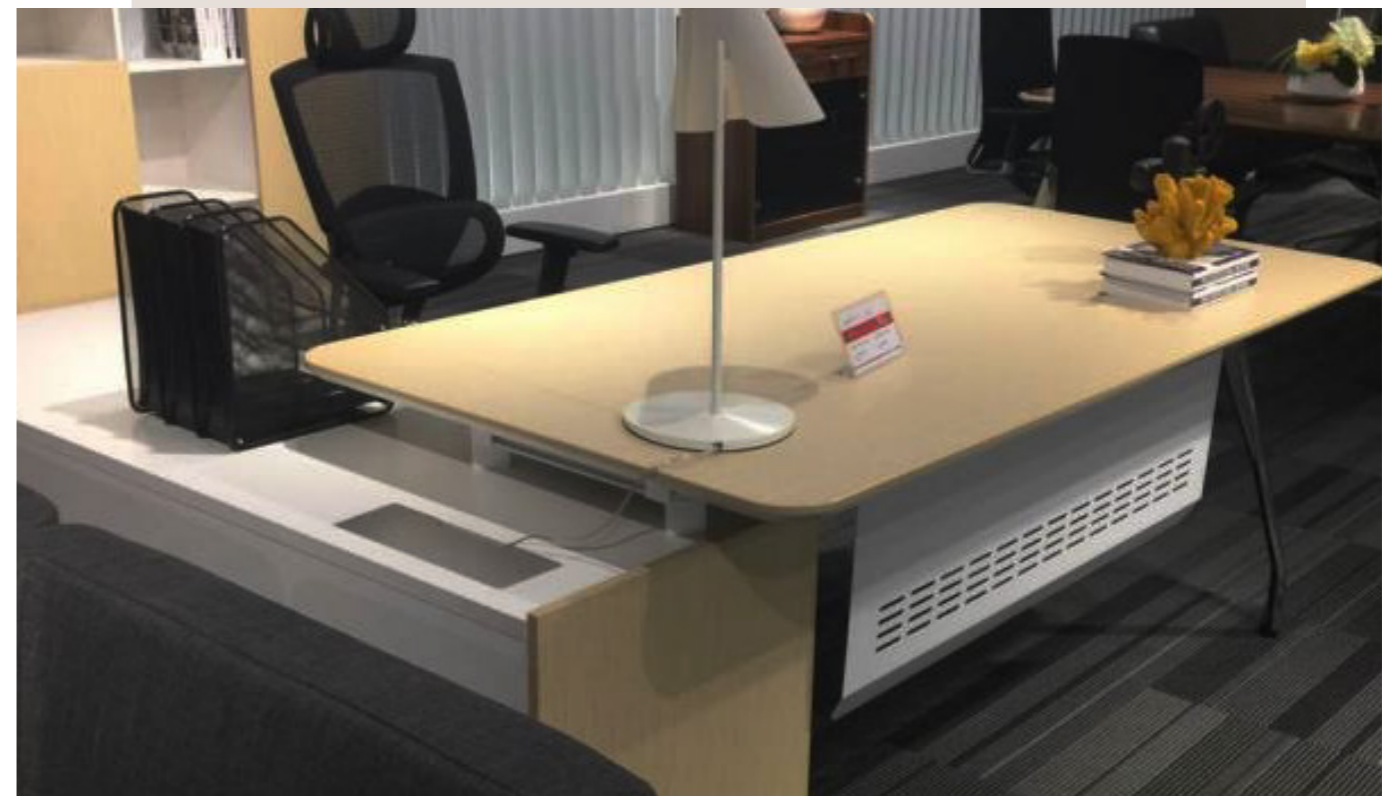
# CK06

## Power Netbox

CK06 is CKQ's first white colored single type power netbox. Customers do not need to cut holes or modify their furniture. The power connection of the power netbox can be connected in series to each other by using an inter-connecting cable to minimize the power outlets and save cables. With its tiny shape and simple design, this power netbox can not only be used at the office environment, but also in households. CK06 has already been approved with UL, 3C, CE & RoHS certification.

## Neat & Seamless Design

The length and modules of the device can be customized with country specific power modules, various types of network cables, telephone cables, VGA, HDMI, video, audio, USB data or charging and overcurrent protection modules in any combination.

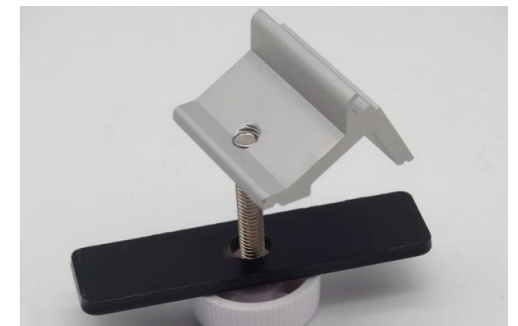
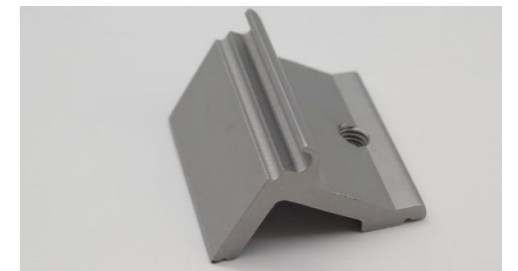
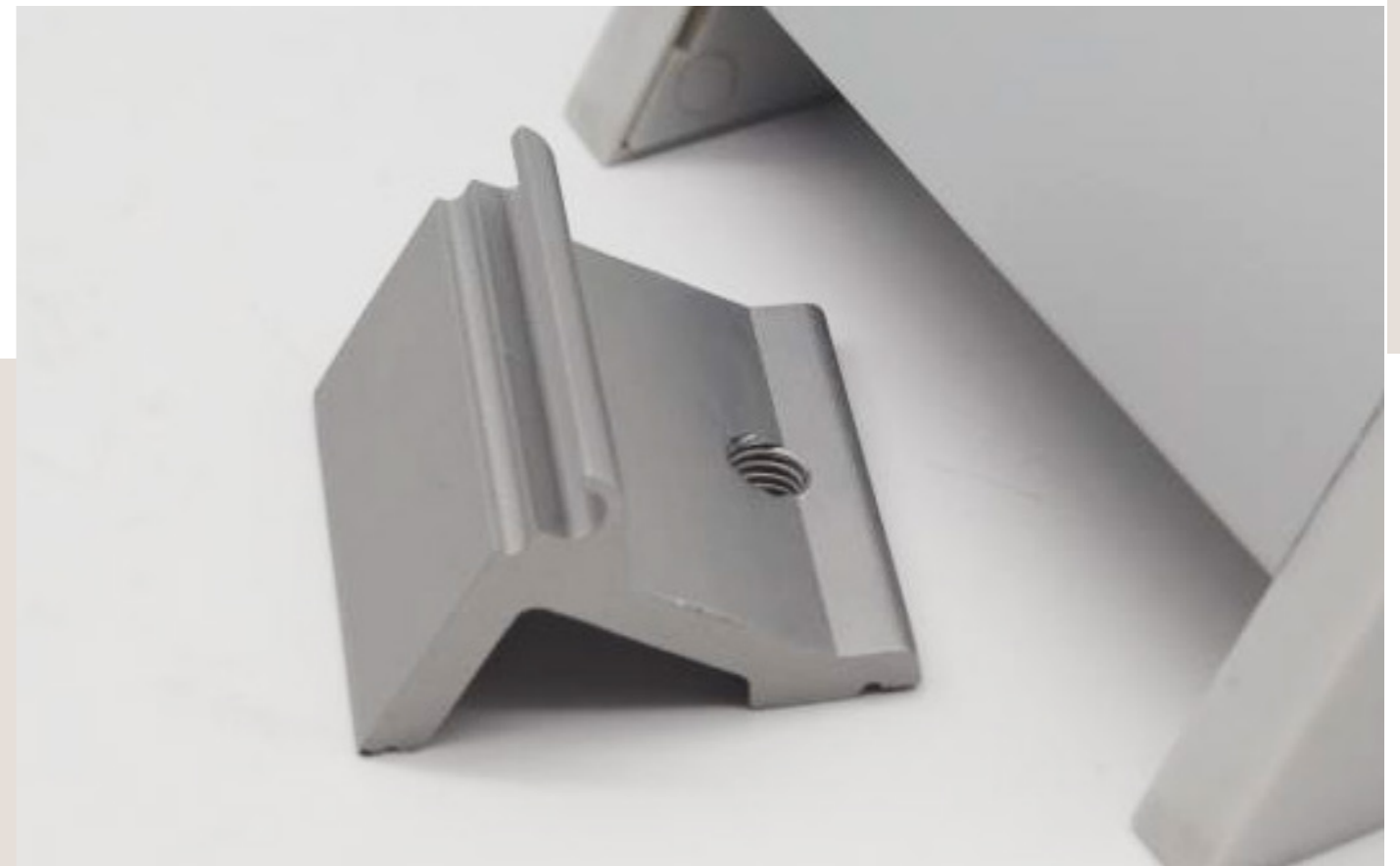




## Clamp Mount

### Installation Method 1

The power netbox can be installed over the grommet or clamp, under the desk or at the side of the desk with the provided mounting brackets.



## Grommet Mount

### Installation Method 2

The power netbox can be installed over the grommet or clamp, under the desk or at the side of the desk with the provided mounting brackets.



## Underneath Mount

### Installation Method 3

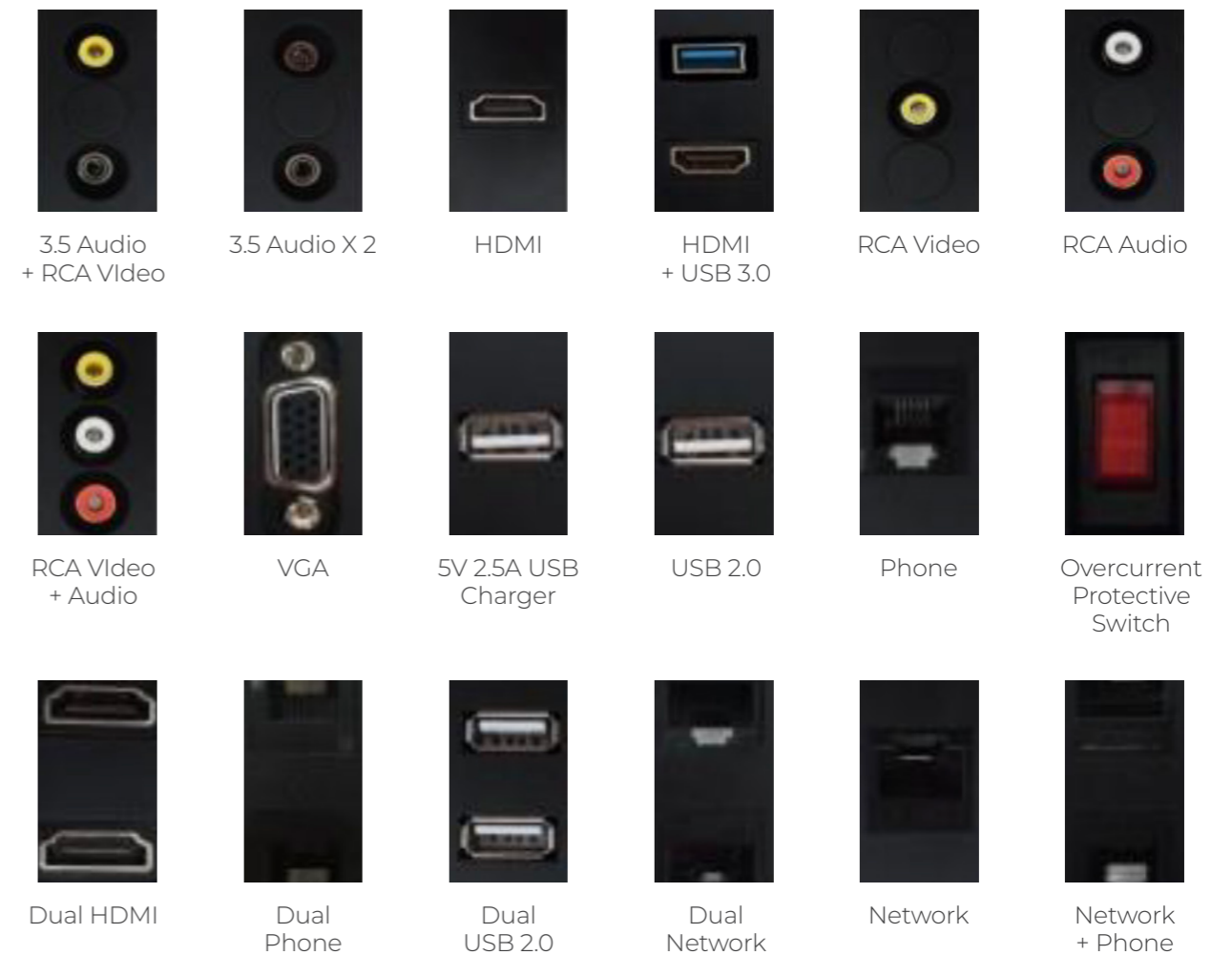
The length and modules of the power netbox can be customized with country specific power modules, various types of network cables, telephone cables, VGA, HDMI, video, audio, USB data or charging and over-current protection modules in any combination.

## Choices of Modules

### Power Socket Module



### Auxilliary Module



Photos shown are for reference ONLY, the actual product may vary a little bit because of the continuously product enhancement.



GENISYS OFFICE SYSTEM PTE LTD

**Singapore**

61 Ubi Avenue 1, #03-08 UB Point  
Singapore 408941

**E:** sales@genisysoffice.com

**T:** +65 6444 1268

Visit us at <http://genisysoffice.com>